



Bender's Isolated Power System (IPS) Panel



Bender's LIM2010  
(Line Isolation Monitor)

# BENDER'S LIM2010: BENEFITS OF RETROFITTING

Your Isolated Power System is your front line of defense against electric shock in wet procedure locations, with your line isolation monitor (LIM) as a lookout, giving advance warning when a hazard is on the horizon. But what do you do when your monitor is getting old, or dies unexpectedly? How do you prevent OR downtime, and placing your staff and patients in potentially hazardous situations? Let the extensive experience of Bender's authorized technicians work for you!

Utilizing Bender Service for testing and consultation allows you to:

- Identify weaknesses, wear, and aging in your system before an old LIM becomes a dead LIM
- Avoid unexpected failure of outdated and obsolete equipment
- Eliminate OR downtime
- Prevent possible safety hazards to patients and staff
- Retrofit a LIM of any make, model, or vintage. *(Many obsolete varieties have pre-made retrofit kits, and custom fabrication is available for those more unique applications.)*

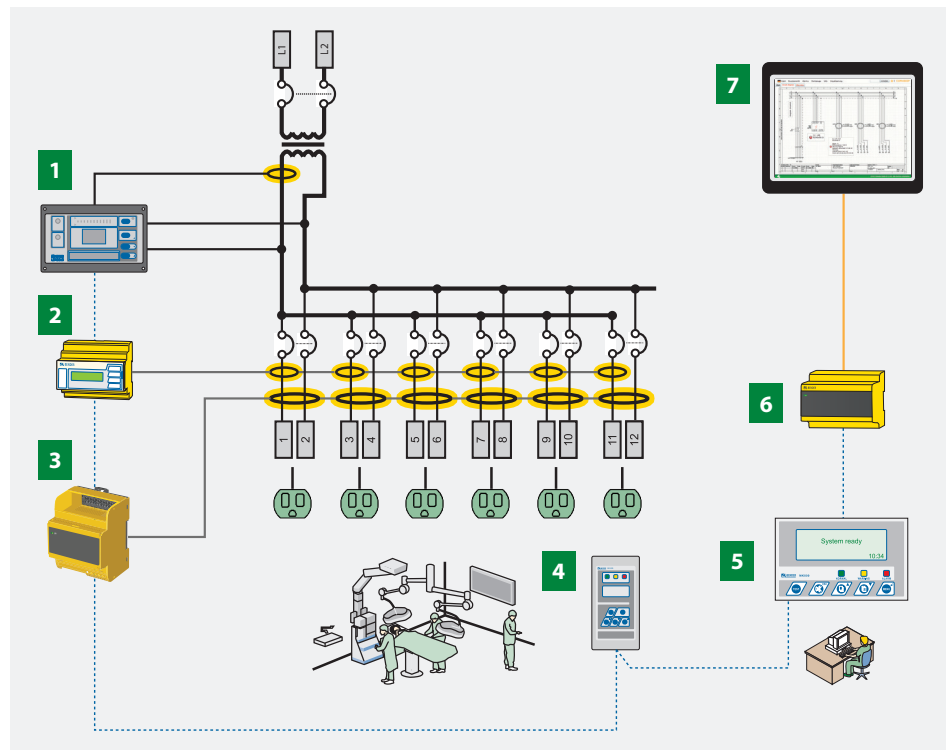
## Updating to Bender's LIM2010 allows you to benefit from the following:

- No interference with electrical equipment
- Special phase-locking circuitry for ultimate stability and repeatability
- 2 programmable voltage-free SPDT contacts for external alarms
- Provision for remote indicators
- Easy to clean rugged front foil
- Digital and analog bar graph displays
- Automatic self-calibration and self-check
- Audible alarm volume adjustable via menu
- RS-485 connections for compatibility with Bender's remote communication system
- Provision to control multiple line isolation monitors via one intelligent remote
- Additional communication devices available: Web browser based/E-mail and SMS
- Interface with Bender's ground-fault location system

## Building Management System (BMS) Utilizing Bender Technology:

### Key system components:

- 1** LIM2010 line isolation monitor
- 2** CMS460-KIT load monitoring expansion kit
- 3** EDS441LNA-KIT-2 ground fault location expansion kit
- 4** MK2430 remote indicating station
- 5** MK800 remote nurse station
- 6** COM465IP-KIT communication expansion kit
- 7** CP907 HMI Station



Bender's LIM2010 [1] can be linked to various remote indicators, and when paired with the MK800 Remote Nurse Station [5] or COM465IP communication expansion kit [6], can communicate with a number of BMS to give your building maintenance team the freedom to monitor panels in ORs while procedures are in progress, without interrupting your medical teams.

Bender Retrofit Services can also upgrade existing isolated power systems (IPS) to include time-saving modules, including the EDS441 Earth Detection System [3] and CMS460 Branch Circuit Load Monitoring System [2]. Thanks to easy plug-in installation in Bender's modular system, adding branch circuit monitoring for faults and overloads is a simple addition with tremendous benefits.

Contact Bender to schedule a consultation with an authorized technician. Our technicians can help you determine the easiest way to retrofit existing IPS, re-certify the IPS after changes have been made, maintain system compliance with NFPA 99, and more.